



135GSM POLYESTER / COTTON COVERALL

Article # G1-04-05



FEATURES

Two Way Zipper with Storm Flap and 1 Upper Chest Button.

Chest Pocket with Button Flap.

1 Pen Pocket on The Left Arm.

Trouser With 2 Swing Pockets.

2 Patch Pockets at the Back.

Elasticized Waist Band at Back with Fastening Metal Buckle for Safety and Comfort.

Fabric Weight: 135gsm.

APPLICATION

Mechanical Work Shops, Standard / Routine Work at Construction Site.

Light Water Splash.

Crane / Forklift and other Moving Equipment Operator.

Protection from UV Light.

COLOUR, SIZE & ERP CODES

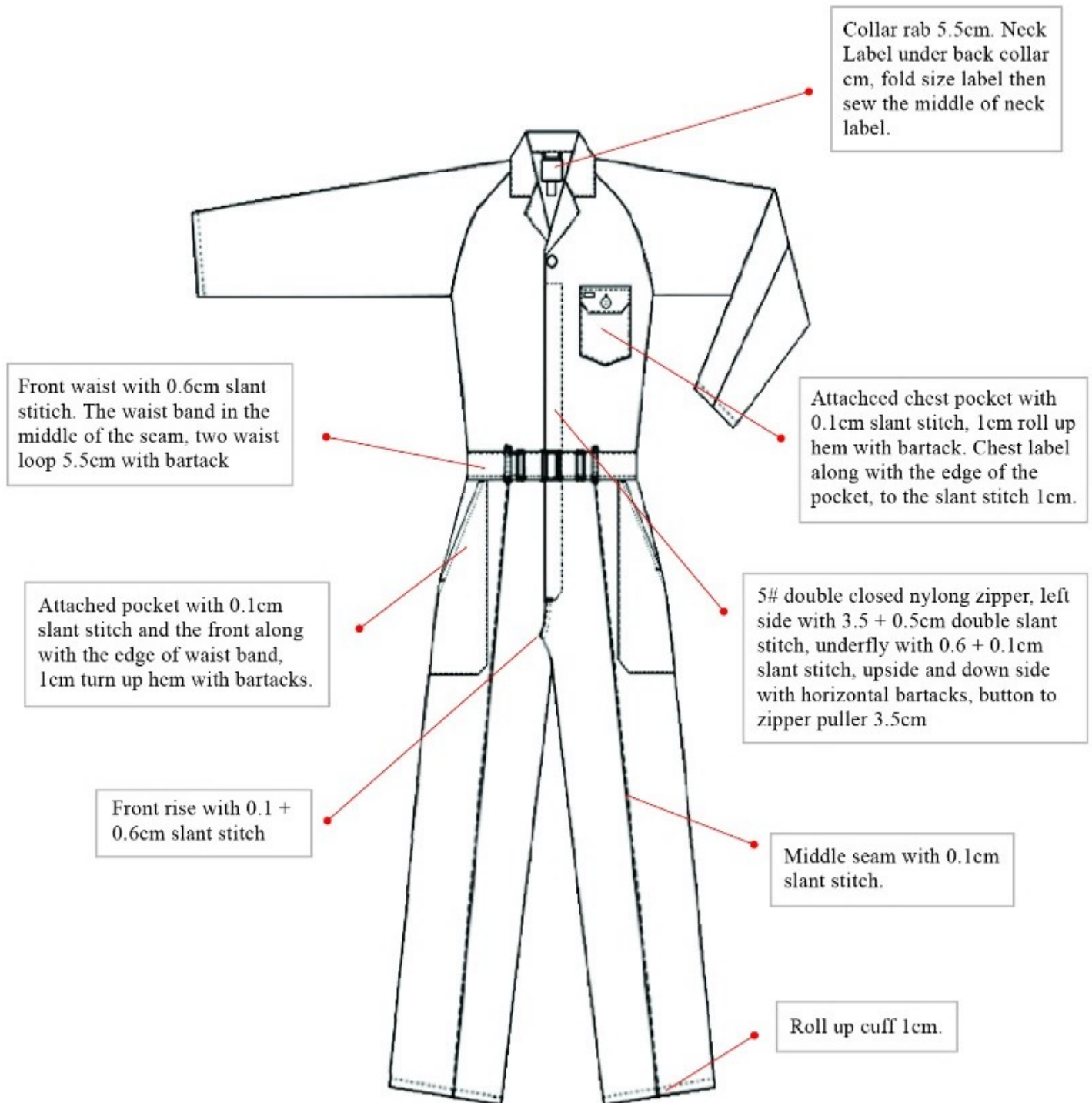
 <p>ERP Code G1-04-05-03</p> <p>Size Available S to 4XL</p> <p>Colour PETROL BLUE</p>	 <p>ERP Code G1-04-05-04</p> <p>Size Available S to 4XL</p> <p>Colour NAVY BLUE</p>	 <p>ERP Code G1-04-05-05</p> <p>Size Available S to 4XL</p> <p>Colour KHAKI</p>
---	---	--



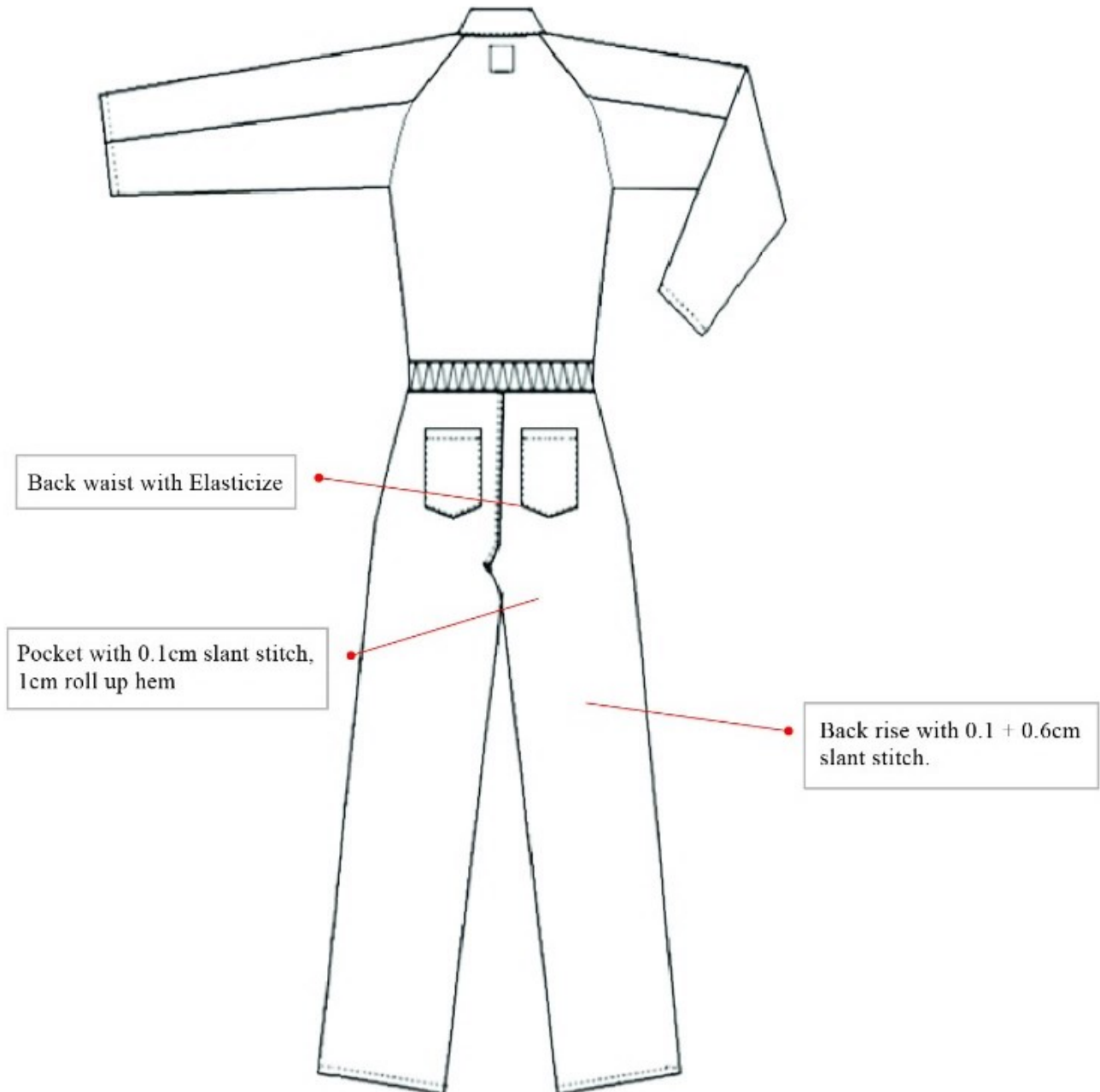
STANDARDS

CE Cat I

SKETCH DIAGRAM FRONT



SKETCH DIAGRAM BACK





SIZE CHART

PART SIZE	S	M	L	XL	2XL	3XL	4XL	5XL	6XL
CHEST	43	45	47	50	52	54	56	58	60
COLLAR TO WAIST	20	20.5	21	21.5	22	22.5	23	23.5	24
COLLAR TO RISE	33	33.5	34	34.5	35.5	36	36.5	37	37.5
SLEEVE OUTSEAM	28	28.5	29	29	29.5	29.5	30	30	30.5
SLEEV OPENING	13	13	14	14	14	14	14	14.5	15
ARMHOLE	19	20	21	22	23	24	25	26	27
COLLAR LENGTH	15.25	15.75	16.25	16.75	17.25	17.75	18.25	18.75	19.25
WAIST	40	42	44	47	49	51	53	55	57
HIP	42	44	46	49	51	53	55	57	59
THIGH	27.25	27.5	28.5	30	30.5	31.5	32.5	33.5	34.5
LEG OPENING	19.25	19.5	20	20	20.5	20.5	20.5	21	21
OUTSEAM	40	40	41	41	42	42	43	43	44
INSEAM	28.5	28.5	29.5	29.5	30	30	31	31	32
SHOULDER	18	19	20	21	22	23	24	25	26
FULL LENGTH	59.5	60	61.5	62	63.5	64	65.5	66	66.5

PACKAGING

UNIT	STANDARD	PACKING PER PKT	PACKING PER CTN	ORIGIN	NET WEIGHT / CARTON (KG.)	GROSS WEIGHT /CARTON (KG.)	CARTON DIMENSION (CMS.)	CBM PER CTN
Pcs.	CE Cat I	1 Pcs.	40 Pcs.	CHINA	_____	_____	_____	_____