

# SPARTAN I, Cargo Pants, 65/35 Polyester/Cotton, 235gsm.

Article # E11978



CAT I

## FEATURES:

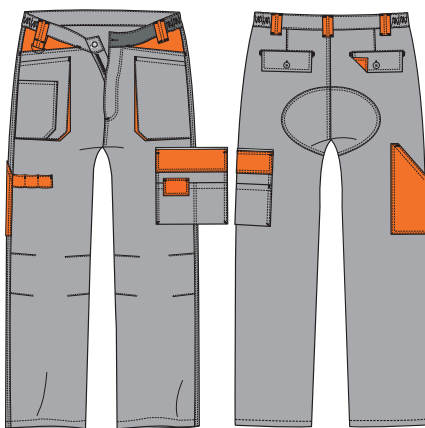
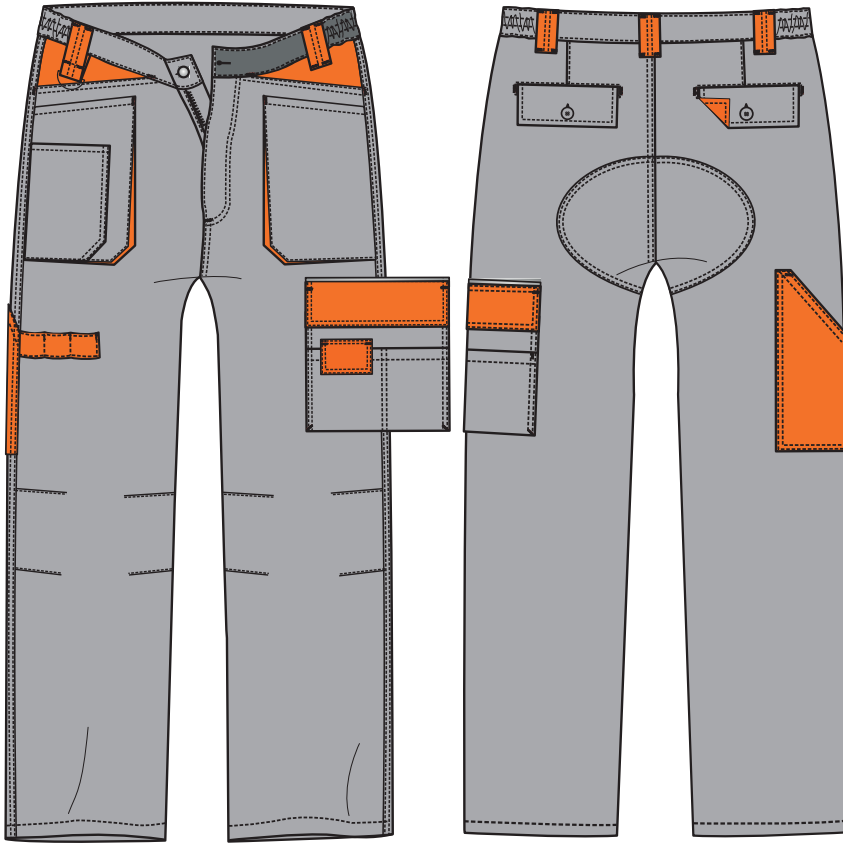
- 65/35 Polyester/Cotton Fabric.
- Weight: 235gsm.
- Abrasion resistant antiwear inserts.
- Knee area designed for extra comfort and durability.
- Tool hammer and ruler loops.
- Two tone double reinforced side pocket on left leg.
- Triple pocket with keychain holder on the right leg.
- Dual contrast bartacks.
- Large belt loop with waist band.
- Extra long open pocket for tools.

ERP CODE: E1197828  
Colour: Grey/ Orange.  
SIZE: S – 4XL.

ERP CODE: E1197829  
Colour: Khaki/ Red.  
SIZE: S – 4XL.

ERP CODE: E1197830  
Colour: R.Blue/ Black.  
SIZE: S – 4XL.

G.Weight/N.Weight:18.00kgs/crtn/17.00kgs/crtn  
Carton dimension: 51.00x39.00x31.00cm  
Cubic meter/Carton: 0.0617  
Packing: 1pc/polybag, 30pcs/carton



SPARTAN I - Grey/ Orange  
E1197828



SPARTAN I - Khaki/ Red  
E1197829



SPARTAN I - R.Blue/ Black  
E1197830

**SPARTAN I, Cargo Pants, 65/35 Polyester/Cotton, 235gsm.**

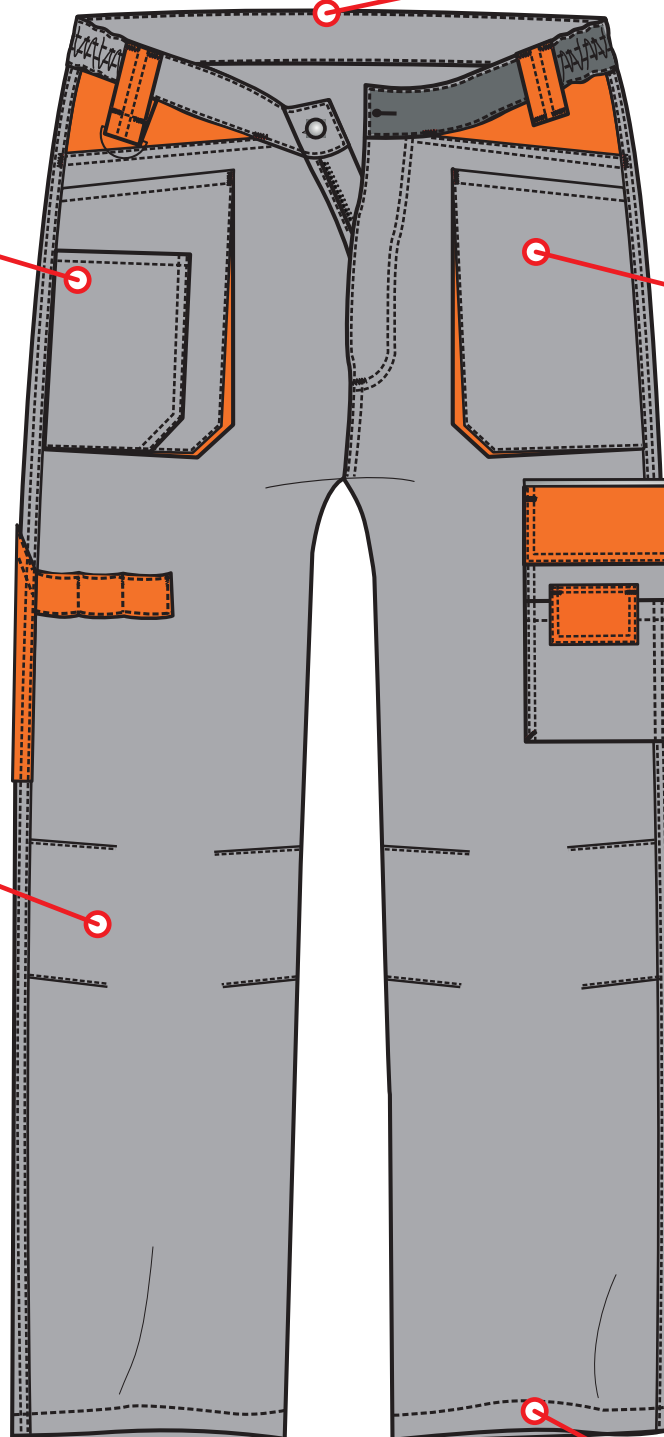
Article # E11978



Elastics two sides with slant stitch on both sides and middle  
Five loops(7.5\*3cm) on waist, right front loop with D circle.

Half bellows pocket attached on insert pocket, right insert in outseam with combination slant stitch on attached pocket

Insert pocket with use combination fabric inside, left insert in outseam



Knees with pleat on fabric, both sides

Leg pocket with big flap, middle slant stitch divided into two pockets, front with small flap.  
Reflective tape with cotton rope inside above flap  
Flaps use combination  
Knees with pleat on fabric.

1cm roll up

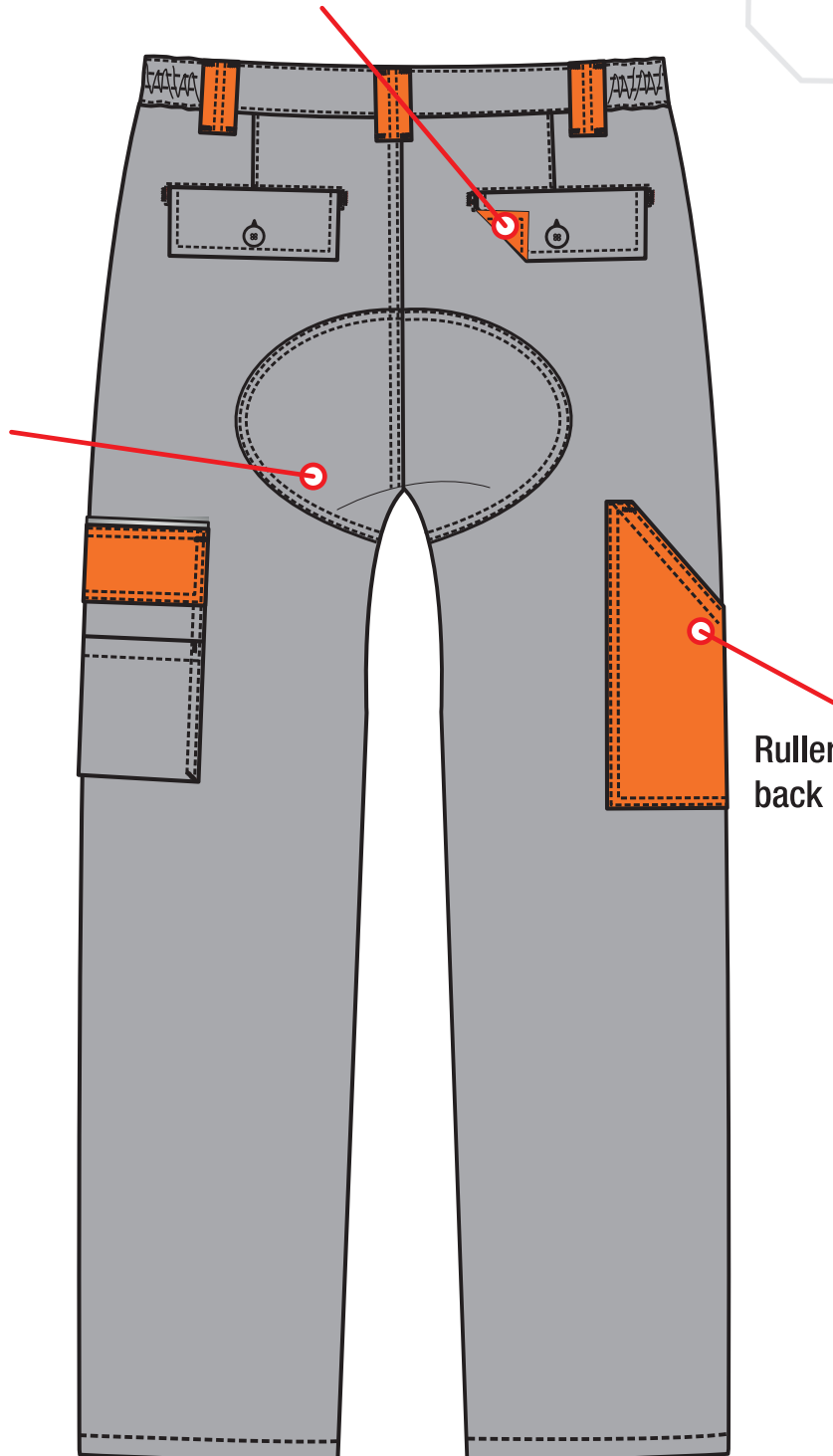
**SPARTAN I, Cargo Pants, 65/35 Polyester/Cotton, 235gsm.**

Article # E11978



Flap stitch with outseam of insert pocket,  
flap inside use combination fabric  
Button on the middle of flap

Back rise with slant  
stitch



Ruller pocket on right  
back

# **SPARTAN I, Cargo Pants, 65/35 Polyester/Cotton, 235gsm.**

Article # E11978



<b>Part size</b>	<b>S</b>	<b>M</b>	<b>L</b>	<b>XL</b>	<b>2XL</b>	<b>3XL</b>	<b>4XL</b>	<b>5XL</b>
LENGTH	101	103	105.5	107	109	111.3	111.3	115.3
HIP	102	106	110	114	118	122	126	130
WAIST	88	92	96	100	104	108	112	116
INSEAM	74	75.5	77	78.5	79.5	81.5	83	84.5
1/2 THIGH	32.5	33.5	34.5	35.5	36.5	37.5	38.5	39.5
1/2 CUFF	23.5	23.5	24	24	24	24.5	24.5	24.5