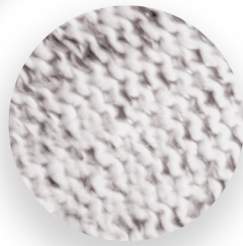


Gorilla Cut 5 PU

Cut5 (ISO C), Palm Coated, PU
(Cut Resistant/ Poly Urethane)



Grey PU Palm Coated Gloves



Grey HPPE Glove Liners

Features:

HDPE fibers in the lining ensures excellent cut resistance with reduced thinness for good dexterity.
Palm coated with polyurethane. Excellent mechanical resistance and durability + Flexibility.
Ergonomic design for comfortable fit.
Knit wrist cuff with breathable back.

Standards:

CE, CATII
EN388:2016 4X43C
EN420:2003/A1:2009

Packing:

12 pairs / bag
120 pairs / carton

Carton Dimension:

55 x 26 x 26 cms.

Carton Weight:

Gross Weight: 8.50 kgs. / carton
Net Weight: 7.50 kgs. / carton

Volume:






CBM 0.60

Origin:

China

Application:

Handling small, sharp-edged items, abrasive materials etc.
Assembly of dry components, electrical components etc.
Photo labs
Automotive industry.
Metal Fabrication.

 4X43C		Abrasion Resistance	4
		Cut Resistance	X
		Tear Resistance	4
		Puncture Resistance	3

Sizes	Binding Color	Item Code
Medium 8	Yellow	E142572920
Large 9	Brown	E142572921
XLarge 10	Black	E142572922

