

# 69007 and 76182 SOFT SHELL JACKETS

Product Number		69007	76182
FABRIC MATERIAL			
93% Polyester, 7% Spandex, TPU Membrane		•	•
FABRIC COLOR	Color Code		
Black/Red	62	•	
Black/Orange	60		•
Navy/Royal	75		•
Navy Blue	53		•
STANDARDS			
Windproof		•	•

76182 (75)



69007



76182 (60)



76182 (53)



Elastic cuffs with thumb holder

## Description

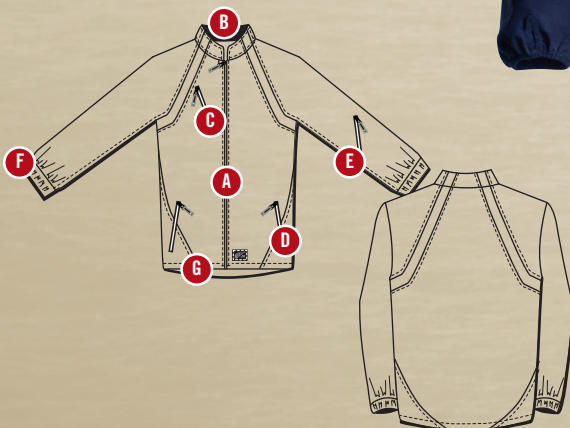
This functional soft-shell jacket is water-resistant and fully-lined for warmth.

- (A) Full length zip closure
- (B) High collar
- (C) Chest pocket with zip closure
- (D) Two side pockets with zip closure
- (E) Sleeve pocket with zip closure
- (F) Elasticized cuffs with thumb holder
- (G) Draw cords at waist

## Ordering

Use the specifications chart below to compare features. Order using the corresponding **Product Number**, 2 digit fabric **Color Code**, and your **Chest** size and **Height**.

SIZING		
Chest	Inch / cm Equivalent Chest	
S	36"-38"	92-97 cm
M	38"-42"	97-107 cm
L	42"-46"	107-117 cm
XL	46"-50"	117-127 cm
2XL	50"-54"	127-137 cm
3XL	54"-58"	137-147 cm
4XL	58"-62"	147-157 cm
Height	Inch / cm Equivalent Height	
Regular	up to 6' 1"	up to 185 cm



971.04.441.2382

Customized garments and PPE programs are available. Call us for more information.